



AREA:

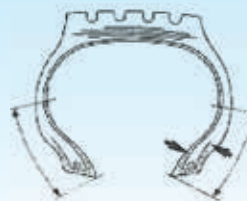
BEAD

CONDITION:

Chafer Separation: Separation in chafer (steel, textile) and rubber, chafer and chafer, or chafer and carcass.

Turn Up Edge Separation: Edge of carcass layer separating.

This damage appears as cracks or swell on outside bead, or separations on inside bead.



CAUSES:

Fatigue of adhesion between rubber and cord by excessive stress and heat due to:

- Under inflation and/or overload.
- Excessive speed and/or braking.
- Fast cornering.
- Improper rims (improper size, fl ange, etc.).
- Faulty (deformed, rusted) rims.

HOW TO CHECK:

Inspect outside-bead for cracks or swells and inside-bead for separations. At the same time, check for tyre overloading in the bead (deformation, abrasion) and tread areas (shoulder wear, heel & toe wear).

Inspect cracks along the whole bead, and at the same time, check the used rim (size, fl ange, contour etc). Finally, check condition of use (air pressure, speed etc).

RECOMMENDATIONS:

- Do not overload tyres. Maintain recommended inflation pressure for the axle loads imposed.
- Avoid excessive speeding, sudden braking, and fast cornering.
- Use correct rims (size, fl ange contour) without deformation and rust.

