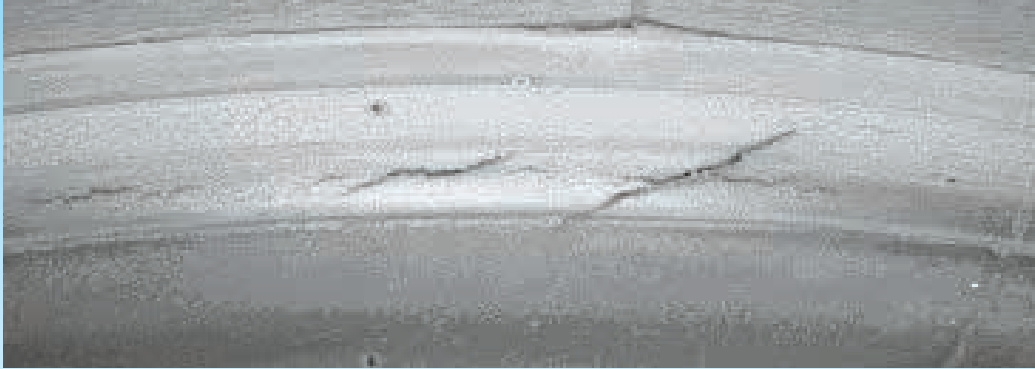


# Diagonal Crack

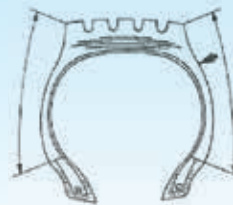


**AREA:**

**SHOULDER & SIDEWALL**

**CONDITION:**

Cracks in a diagonal direction on the surface of shoulder or sidewall on drive and trailer axles.



**RECOMMENDATIONS:**

- Frequently can be a result of high torque transfer, aggravated by under-inflation.
- Do not overload tyres. Maintain recommended inflation pressure for the axle loads imposed.

