

# Worn Out

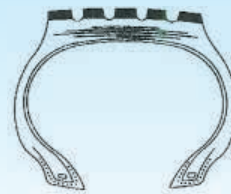


**AREA:**

**GENERAL**

**CONDITION:**

For trucks (greater than 3.5 tonnes g.v.w), current tread depth legislation requires that they must have a minimum of 1mm of tread in a continuous band throughout the central three- quarters of tread width and over the whole circumference of the tyre. These worn out tyres are also free from compensation for any damage.



---

**RECOMMENDATIONS:**

Change worn out tyres to new ones.

**HOW TO CHECK:**

Measure the remaining tread depth with a calibrated depth gauge.

