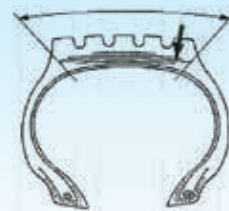




**AREA:** TREAD & CARCASS

**CONDITION:** Separation between tread rubber and belt (breaker), between belt (breaker) layers, or between belt (breaker) and carcass.



## CAUSES:

Breakdown of adhesion between components in the tread areas due to:

- Under inflation and/or overload.
- Excessive speed.
- Fast cornering.

## RECOMMENDATIONS:

- Use tyres at recommended pressure and do not exceed maximum load (Load Index).
- Drive at an appropriate speed.
- Avoid fast cornering.

## HOW TO CHECK:

To check if tyre has been over deflected inspect the inner liner looking for signs of creases (circumferential dark lines, rubber crumb) and inspect the bead area for discolouration (Blue colour) and abrasion.

Make distinction among tread separation, cut separation and heat separation.

