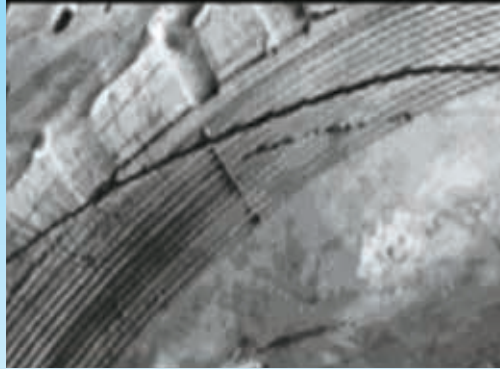
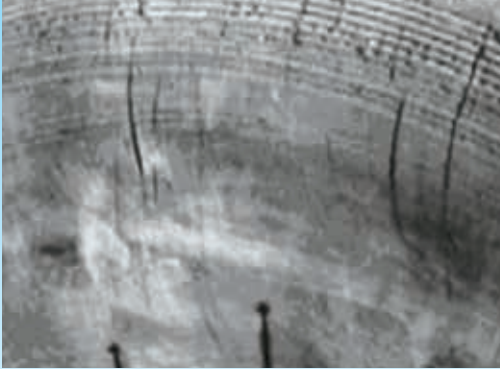


Truck Tyre Injury Guidance

Side Cut (through)



AREA: SHOULDER & SIDEWALL
CONDITION: Cuts in shoulder or sidewall.



CAUSES:

- Contact with curbing, pit rails & general road hazards.

RECOMMENDATIONS:

- Avoid obstacles where ever possible; if the obstacles cannot be avoided reduce the speed.
- Check dual tyres frequently, remove stones caught between the duals immediately, and repair damage immediately.
- If the damage is superficial and has not reached the ply cords the tyre can be turned on the rim and continued in service. If the tyre has body ply exposure remove immediately from service and repair within the recommended limits.

HOW TO CHECK:

Check if the cuts are occurring at similar positions on the sidewall/shoulder and are visibly comparable to each other and if so investigate vehicle operations to determine the cause of the damage.

