

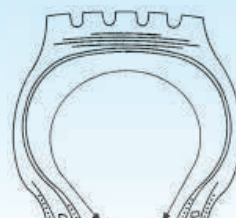


AREA:

GENERAL

CONDITION:

The inside injury due to foreign materials or fitting tools coming into contact with the inside of the tyre during mounting or dismounting. A series of random cuts and abrasions marks around the circumference of the inner liner.



CAUSES:

- Careless mounting or dismounting.
- Foreign object in tyre, original manufactured liner repairs.
- Loose tyre valve components.
- Tubeless tyre fitted with inner tube and contamination between tube and liner

RECOMMENDATIONS:

- Check inside of tyres and remove foreign materials every time before mounting.

HOW TO CHECK:

Inspect the inner liner in good lighting for marks, cuts or damages.

