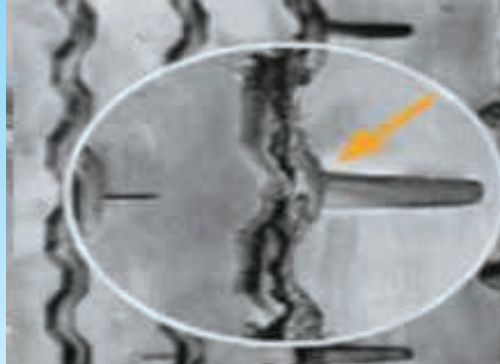


Truck Tyre Injury Guidance

Groove Crack

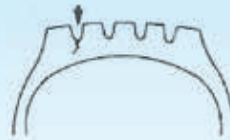


AREA:

TREAD

CONDITION:

Cracks are created in grooves of tread.



CAUSES:

- Incorrect tyre pressure.
- Growth of existing cuts caused by foreign objects.
- Rough road conditions.

RECOMMENDATIONS:

- Check tyres frequently and remove stones from grooves immediately.
- In case of cuts, repair them immediately.
- Drive carefully to avoid obstacles. If the obstacles cannot be avoided, reduce the speed.

HOW TO CHECK:

In case of groove cracking due to biting stones, inspect stone marks on sidewalls of grooves.

