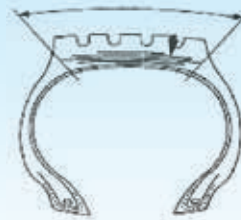


**AREA:** TREAD & CARCASS  
**CONDITION:** Separation caused by cuts on the tread and/or shoulders.



## CAUSES:

- Deteriorated adhesion by moisture, mud and sand penetrating through cuts due to obstacles.
- Developed rust in steel cords by moisture penetrating through cuts due to obstacles.
- Tyres easily tend to be cut under over inflation and/or overload.
- Under inflation and/or overload accelerates the separation.

## HOW TO CHECK:

In order to distinguish cut separation from tread separation, inspect the cut mark near the separated portion. Normally moisture penetrates along steel cords of the belt.

## RECOMMENDATIONS:

- Avoid obstacles. If the obstacles cannot be avoided, reduce the speed, especially on rough roads and terrains or wet surfaces.
- Select the pattern and specification appropriate for the application.
- Check tyres and remove foreign materials in tread frequently. If cuts in tread are found out, repair them immediately.

