

Chipping

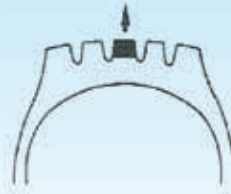


AREA:

TREAD

CONDITION:

The tread rubber peels off like fish scales.



CAUSES:

- Can be aggravated by sudden acceleration and braking, loss of traction, incorrect tyre pressure, sharp turning.
- Misapplication of the tyre in relation to the road condition type.
- Incorrect use of brake tester.

RECOMMENDATIONS:

- Ensure appropriate tyre type is used as per application.
- Avoid rough driving and reduce speeds on rough terrains.
- Ensure correct use of brake tester.

HOW TO CHECK:

Check the tread surface visually.

