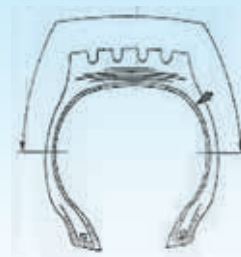


CBU due to Cut or Shock



AREA: CARCASS & LINER
CONDITION: Carcass cord is broken up at shoulder and/or sidewall.



CAUSES:

- Obstacles such as stones, pieces of glasses, nails, steel plates, etc.
- Foreign materials such as stones picked up and caught between the duals.
- A sharp edged foreign object penetrates in a localized area and causes the casing to rupture.

HOW TO CHECK:

Check whether cut marks exist near the damaged portion on shoulder and/or sidewall. When some sidewall portion of radial truck/bus tyres swells, especially in inflated tyres, inspect the tread located at the swelled portion of the sidewall and look for the injury which damages the carcass cord under the tread.

RECOMMENDATIONS:

- Drive carefully to avoid obstacles. If the obstacles cannot be avoided, reduce the speed, especially on wet surfaces.
- Check tyres frequently, and remove foreign materials between the duals.
- Use tyres under the recommended air pressure and load.
- Use proper size of rims to avoid the sidewalls contacts between the duals.
- Remove moisture from insides of tyres completely before fitting.
- Store steel radials indoors so that they are kept away from moisture, rain, wind and high humidity.
- Avoid long storage of steel radials.

