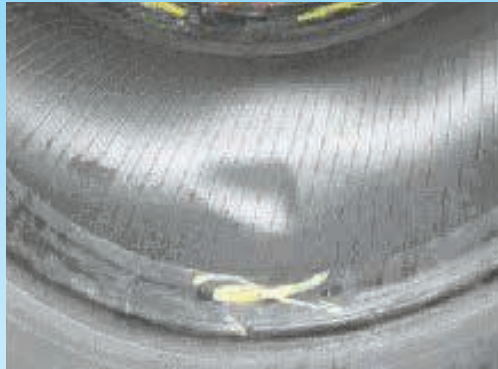
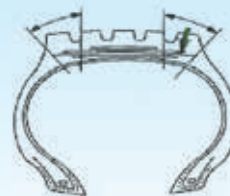


# Belt Edge Separation



**AREA:** TREAD & CARCASS  
**CONDITION:** Separation at the belt edge extending to the tread centre.



## CAUSES:

Breakdown adhesion between the belts:

- Under inflation and/or overload.
- Excessive speed.
- Fast cornering.
- Axle misalignment.
- Constant deformation of the casing structure.

## HOW TO CHECK:

To check if tyre has been over deflected inspect the inner liner looking for signs of creases (circumferential dark lines, rubber crumb) and inspect the bead area for discolouration (Blue colour) and abrasion.

Look for raised areas particularly in the area of the shoulder. This may produce excessive wear around the area of separation.

## RECOMMENDATIONS:

- Use tyres at recommended pressure and do not exceed maximum load (Load Index).
- Drive at an appropriate speed.
- Avoid fast cornering.

