



Telephone: 01787 226995
Fax: 0845 3016853
E-mail: mail@btmauk.com
Website: www.btmauk.com
Registered Office: Peershaws
Berewyk Hall Court
White Colne
Colchester
Essex, CO6 2QB

Tyre Technical Advisory Committee

Issued: 09/06/2010 Reviewed: 10/03/2015

Tyre complaint handling: Code of practice

Introduction

The purpose of this document is to set out the framework for handling consumer complaints when the quality of the tyre itself is in question.

The Process

Consumer complaints that the tyre dealer is confident are due to accidental or service related damage should be dealt with at source. However, should there be reasonable doubt as to the cause of the complaint the tyre(s) may be submitted to the appropriate tyre manufacturer for a technical examination.

Tyre complaints are dealt with individually taking into account the condition of the tyre and the information supplied on the "Standard Application Form" (SAF). Any allowance offered is a gesture of goodwill and does not constitute any admission of liability or fault with the product.

Standard Application Forms can be downloaded from the BTMA web-site www.btmauk.com The download also contains guidance on completing the form.

The result of the examination will be communicated both to the consumer and the dealer.

The value of an allowance is based upon the residual life of the tyre (i.e. the unused portion of the tread pattern depth) and the prevailing replacement cost to the dealer at the time of examination.

Should the manufacturer grant an allowance, the dealer should apply the same proportion to the retail price to determine the consumer rebate.

In the event that the consumer is not satisfied with the outcome of the manufacturer's examination it is possible for the consumer to engage an Independent Tyre Examiner at the consumer's expense and to lodge an appeal. Names and contact details of Independent Tyre Examiners are available from the BTMA.

The Procedure

The consumer should return a tyre under complaint to the dealer from whom it was originally purchased. The vendor is legally obliged to deal with the complaint. If the tyre dealer did not sell the original tyre he has the option to handle the complaint or decline. Irrespective of the circumstances, if the dealer agrees to handle the complaint the following procedure should be followed.

- Examine the tyre; the problem may be accidental or linked to service conditions, if so this can be pointed out to the user at the time and avoid the need to return the tyre. If there is some doubt then the tyre should be submitted to the Manufacturer for examination.

The comments in this Position Statement are based on the general operating practices and environment found in the United Kingdom and the Republic of Ireland. No undertaking express or implied is given regarding the applicability of these comments to other operating environments. No part of this publication may be reproduced, stored in a retrieval system, or transmitted in any form or by any means, mechanical, photocopying, recording or otherwise, without the prior permission in writing of the publisher.

Although great care has been taken in the compilation and preparation of this Position Statement to ensure accuracy, the publisher cannot in any circumstances accept responsibility for errors or omissions or advice given in this publication.

Tyre Technical Advisory Committee

Issued: 09/06/2010 Reviewed: 10/03/2015

- Assist the Customer to complete and sign the Standard Application Form (SAF). Failure to record all the information requested in the SAF will delay the collection of the tyres, as it may be necessary to return the SAF to the Dealer so that the required information can be added.
- Contact the relevant Tyre Manufacturer notifying them a complaint tyre is requiring collection. The Manufacturer will advise a reference number that should be written by the Dealer on the SAF.
- Fax / Email the completed and signed SAF to the appropriate Tyre Manufacturer. This will generate a Collection Note, provided the SAF is correctly completed.
 - (Note: Some manufacturers may require being informed by telephone in addition to receiving a faxed copy of the SAF)
- From receipt of the faxed copy of the SAF the Tyre Manufacturer will endeavour to collect the tyre(s) within seven (7) working days.
- Retain a copy of the SAF and record details of the complaint in a register for reference purposes.
- Place the original SAF in an envelope and attach it to the relevant tyre. If there is more than one tyre involved in a single complaint, and if practical, tape them together.
- If appropriate and to assist the Tyre Inspector, mark the tyre at the location where the problem may lie. e.g. Sidewall bulge
- Ideally hold the tyre(s) in a designated area to await collection.
- The collecting driver is only authorised to accept tyres where a SAF is attached to the tyre(s) and the details and quantities correspond to the information on the Collection Note.
- Both parties should sign the collection note and the Tyre Dealer is advised to keep a copy in case of any queries.

Upon receipt of the tyre(s) the manufacturer will endeavour to complete the examination and reporting process within fifteen working days. However, there may be exceptional circumstances associated with certain types of complaints where the investigation may take longer.

If a tyre dealer has not received any response within twenty working days after collection the manufacturer should be contacted.

The comments in this Position Statement are based on the general operating practices and environment found in the United Kingdom and the Republic of Ireland. No undertaking express or implied is given regarding the applicability of these comments to other operating environments. No part of this publication may be reproduced, stored in a retrieval system, or transmitted in any form or by any means, mechanical, photocopying, recording or otherwise, without the prior permission in writing of the publisher.

Although great care has been taken in the compilation and preparation of this Position Statement to ensure accuracy, the publisher cannot in any circumstances accept responsibility for errors or omissions or advice given in this publication.



Telephone: 01787 226995
Fax: 0845 3016853
E-mail: mail@btmauk.com
Website: www.btmauk.com
Registered Office: Peershaws
Berewyk Hall Court
White Colne
Colchester
Essex, CO6 2QB

Tyre Technical Advisory Committee

Issued: 09/06/2010 Reviewed: 10/03/2015

Tyres submitted for examination will normally be disposed of by the manufacturer. If the complaint is rejected the consumer may request in writing within 28 days of the notice of rejection the return of the tyre to the dealer at the consumer's expense.

Example of Allowance Calculation

If the tyre is 50% worn it is deemed the residual value will be 50% of the replacement cost.

Dealer's buying price:	= 100
Value of Manufacturer's credit:	= 100 x 50% = 50
Dealer's sell out price:	= 130
Value of Dealer's credit to Consumer:	= 130 x 50%
	= 65

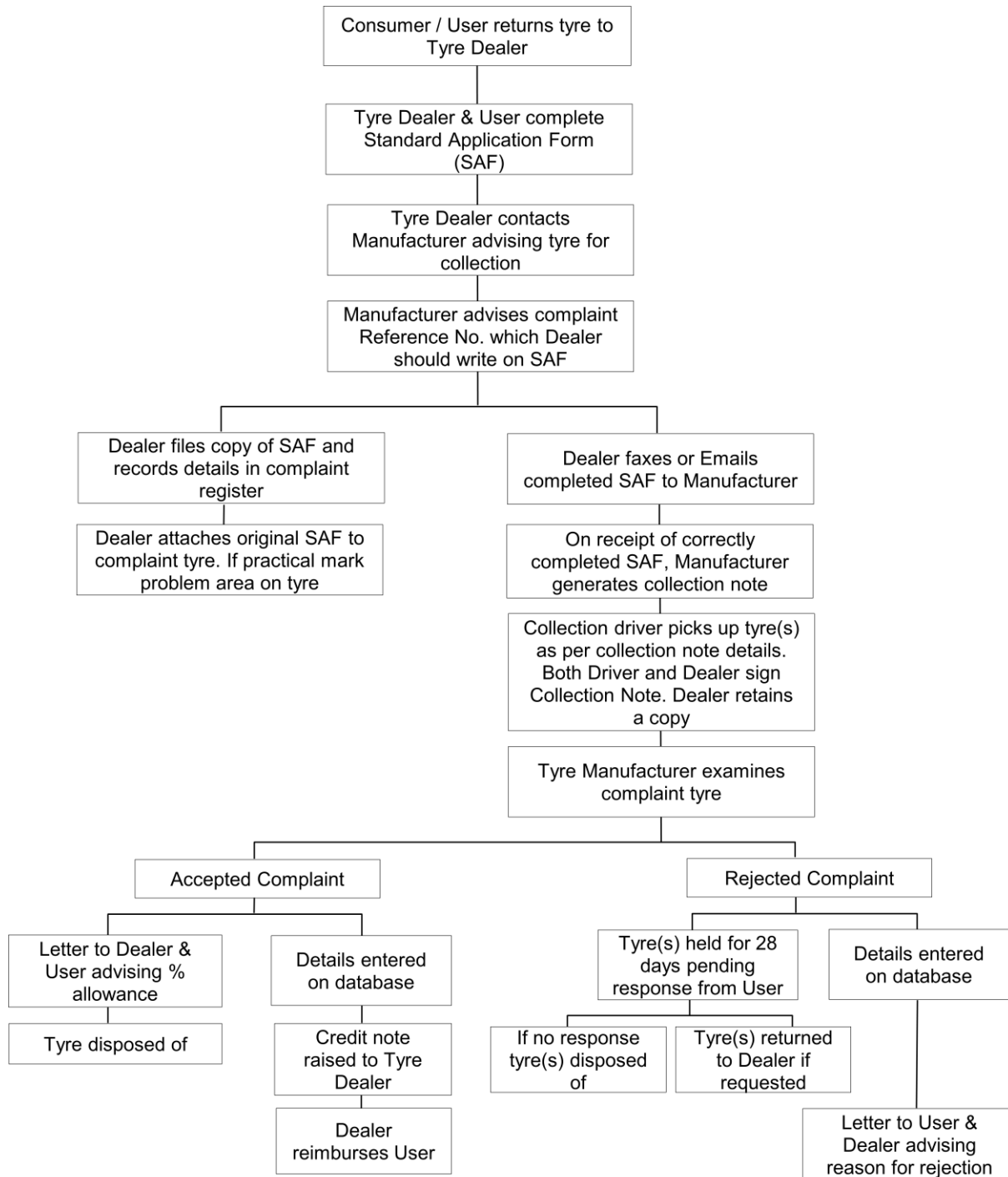
The comments in this Position Statement are based on the general operating practices and environment found in the United Kingdom and the Republic of Ireland. No undertaking express or implied is given regarding the applicability of these comments to other operating environments. No part of this publication may be reproduced, stored in a retrieval system, or transmitted in any form or by any means, mechanical, photocopying, recording or otherwise, without the prior permission in writing of the publisher.

Although great care has been taken in the compilation and preparation of this Position Statement to ensure accuracy, the publisher cannot in any circumstances accept responsibility for errors or omissions or advice given in this publication.

Tyre Technical Advisory Committee

Issued: 09/06/2010 Reviewed: 10/03/2015

Tyre Complaint Handling Flow Chart (Note: There may be slight variations in process according to the manufacturer)



The comments in this Position Statement are based on the general operating practices and environment found in the United Kingdom and the Republic of Ireland. No undertaking express or implied is given regarding the applicability of these comments to other operating environments. No part of this publication may be reproduced, stored in a retrieval system, or transmitted in any form or by any means, mechanical, photocopying, recording or otherwise, without the prior permission in writing of the publisher.

Although great care has been taken in the compilation and preparation of this Position Statement to ensure accuracy, the publisher cannot in any circumstances accept responsibility for errors or omissions or advice given in this publication.